

### FIRST STEPS

**Tonocracy requires that you have a user account** - if you do not already have one, go to [Tonocracy.com](https://tonocracy.com) and sign up. Once registered, you'll be able to download the application and get started

*.(Please ensure that you have a reliable internet connection when first setting up, as the factory content is not included in the installer and needs to be downloaded before use.)*

**When launching Tonocracy for the first time, you will be presented with a login screen.** Enter the username and password that you signed up with.

*(NOTE: If you have not confirmed your email address, you will not be able to log in! If you did not receive a confirmation email, it may have been blocked by your provider. If this happens, please try signing up with a different email address.)*

**Once logged in, the factory content will be downloaded.** This usually just takes a minute or two but can depend on the speed of your internet connection. You can monitor the progress in the upper-right corner of the main window, near the "Sync" button. Once the factory content is ready, you should see a default preset loaded in the main signal flow routing area.

**If you are using the standalone application, you will need to configure your audio settings.** You can do this either through the main menu on the upper-left, or by clicking the "Show Audio Settings" button if it is visible at the bottom of the signal flow panel. In the settings dialog, choose the appropriate audio interface for both input and output, and make sure that the correct groups of input/output channels are selected, depending on how your instrument and monitors/headphones are connected. Tonocracy works best at a sample rate of 48000 kHz, and a buffer size of 16 or 32 samples. If you experience any clicks and pops while playing, try increasing the buffer size, but keep in mind that this increases the latency and has a very significant effect on the "feel" of amps and captures. Also note that latency will be increased if you are not using the same physical audio device for both input and output.

**After configuring your audio settings, make sure you have the appropriate input channel selected in the signal flow.** Click on the input block, and use the parameter panel in the lower area of the window to

select the input channel. By default, the first channel is used, but note that some audio interfaces assign the dedicated microphone input to the first channel, and the instrument input to the second. In this case you will need to manually select the second channel. Consult the user guide for your audio interface if you are unsure of which channel to use.

**If your audio interface has more than two outputs, click the output block and make sure that the appropriate channels are selected for the left and right output.**

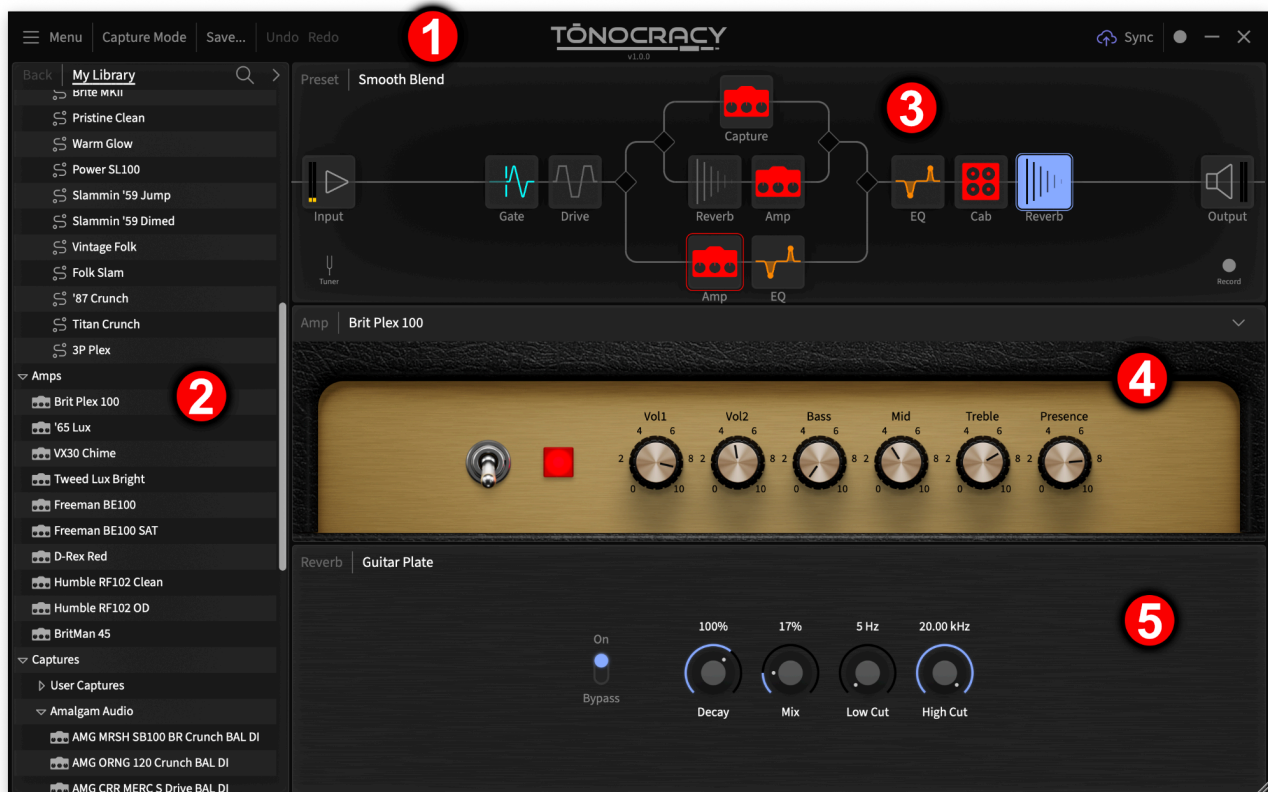
**If everything is set up properly, you should now be able to play through the default preset.** If you don't hear anything, double check the audio settings and input/output channel selections.

**To get the best possible results, you should also set the "Interface Level" parameter of the input block to match your particular audio interface hardware.** This ensures that the input gain is set appropriately, so that the amps and captures do not sound under- or over-gained. By default this is set to a value that should work reasonably well across a range of different interfaces, but you can precisely calibrate your signal chain by using the value found in the manufacturer's specifications for your interface. This value is often labeled "Maximum input level" and has units of "dBu". Set the "Interface Level" parameter to this value, and make sure that any analog gain control is turned to zero.

*(NOTE: There is some "common wisdom" that you should turn up the analog gain control of an instrument input until you have a signal that is peaking within a certain range. For modern pro or semi-pro audio interfaces this is usually unnecessary, and it is better to leave the gain at zero to have a known reference, and avoid any possibility of clipping.)*

### UI OVERVIEW

The main window is organized into five main sections. At the top is the **toolbar** [1], which contains buttons for showing the main menu as well as triggering actions such as Save, Undo, Redo, and Sync. The **library browser** [2] is used for navigating through the user and factory content, loading presets and blocks, as well as viewing cloud library search results. The **signal flow routing** [3] shows the blocks that comprise the current preset. The **amp panel** [4] shows the primary controls of the last selected amp or capture, and **parameter panel** [5] shows the full parameter set of the currently selected block.



### USER LIBRARY

The user library is similar to a file system that lets you easily access and organize all of your tone shaping assets like amps, ToneSnap gear snapshots, NAM files, cabs, impulse responses and effects. These main asset categories get their own top level folder. Users can create and name nested folders within these categories and populate them with their own assets. Please note, users can not directly modify factory content or content made by another user.

**Presets:** Tonocracy comes stocked with an assortment of presets so you can start playing the moment you open it for the first time. They are designed to showcase tones from a variety of styles, provide a starting point for you to find your sound and get an idea of what is possible. Customizing presets is simple: Make changes to any parameters within a preset then use the save button to lock them in. 'Save over existing' will overwrite the preset in use. 'Save a copy' will create a new preset and you will be prompted to enter a new unique name. Factory presets cannot be overwritten but you can save a modified copy in your user preset folder.

The Undo/Redo actions only cover parameter changes and modification to the signal flow. Modifications done to library assets such as renaming, moving, deleting, ect. cannot be undone.

**Amps:** Tonocracy's flagship amp models are powered by Atomic's SchemAccurate technology. It combines the best of both component modeling and AI-based techniques, resulting in a fully adjustable model with controls that respond just like its real world counterpart. The factory amp list contains a well curated but growing collection of classic amps that are the basis for more exciting developments in the future.

**ToneSnaps:** Tonocracy's proprietary ToneSnap gear snapshot technology delivers an extremely high level of accuracy when capturing gear. We pay special attention to other integral aspects of the guitar playing experience like the transition between clean, breakup, and full-on distortion which guitarists adjust using their playing dynamics and by using the guitar volume control. We feel that in these other less-referenced but equally important benchmarks, ToneSnap is best in class. In this folder you can find a set of ready-to-use captures made by several premier creators.

The infinite possibilities available with ToneSnap gear snapshot tech can leave some with analysis paralysis - this is why Atomic has partnered with some of the leaders in the tone/gear community to provide diverse yet well-curated collections that cover the most popular styles and genres. You may not even need to venture beyond these collections to find your ideal tone!

**NAM Support:** Tonocracy has the ability to play full NAM models natively. Simply drag your favorite NAM files from a desktop folder and drop them into the Tonocracy library. From there, add them to your signal chain as you would with any other Tonocracy asset.

**Speaker Compression:** The speaker compression parameter allows you to dial in the nuanced and critical relationship between the power amp, the speaker voice coil, and the natural compression that occurs in real guitar amp speakers. We apply this modeling to our SchemAccurate and ToneSnap technologies as well as to NAM models imported into Tonocracy. This delivers the otherwise elusive feel that can be missing from other offerings. Just turn the knob and season to taste (or feel, as the case may be).

**Cabs:** Tonocracy includes a diverse set of factory cabinets from ML Sound Labs, Amalgam Audio, and others. To import your own cabinet IRs, drag WAV files into the 'User Cabs' folder. Cabinet impulses can be up to 8192 samples in length, giving superbly accurate frequency response.

**FX:** Inside this folder you will find several categories of effects, including Drive, Reverb, Modulation, Delay, Dynamics, EQ, and Pitch. To import your own reverb IRs, drag WAV files into the 'User Reverbs' folder. Expect to see more here soon!

### SIGNAL ROUTING

Tonocracy offers a very flexible signal flow routing system that allows everything from a simple chain of blocks to complex, nested parallel paths. All operations are done by dragging and dropping blocks, either within the signal flow, or from the library to the signal flow.

To add a new block, locate it in the library, and then drag it to the desired location. As you are dragging over the signal flow, a light gray rectangle will highlight the location it will be inserted. Dragging between two existing blocks in a chain will insert the new block in the middle. Dragging immediately above or below an existing block will insert the new block in parallel.

Existing blocks can be moved around to any location with the same interaction.

To delete a block, move the mouse over it and click the "X" button that appears.

When a new parallel path is created, two extra blocks will be added to the chain at the split and join points. These are selectable, and have parameters just like normal blocks, but cannot be directly moved or deleted. Instead of moving a split or join directly, move other blocks into or out of the upper/lower paths. To collapse the parallel path, remove all blocks from either the upper or lower path. Once either path is empty, the split and join will be removed.

*(HINT: Use the panning controls in the join block to achieve stereo spread when creating dual-amp or dual-cab routings)*

The input and output blocks always appear at the beginning and end of the overall signal flow. They cannot be moved or deleted, and their parameters are not saved as part of a preset. (Think of these as "global" blocks.)

To make it quick and easy to switch out items within a given category (Amp, Cab, Reverb, Delay, etc.), there is a "Browse category: ..." shortcut accessible from the context menu that appears when mousing over a block. This will open the library folder associated with the category, allowing quick replacement by double-clicking the listed items. (This can also be triggered by clicking the name of the block displayed at the top of the amp and parameter panels.)

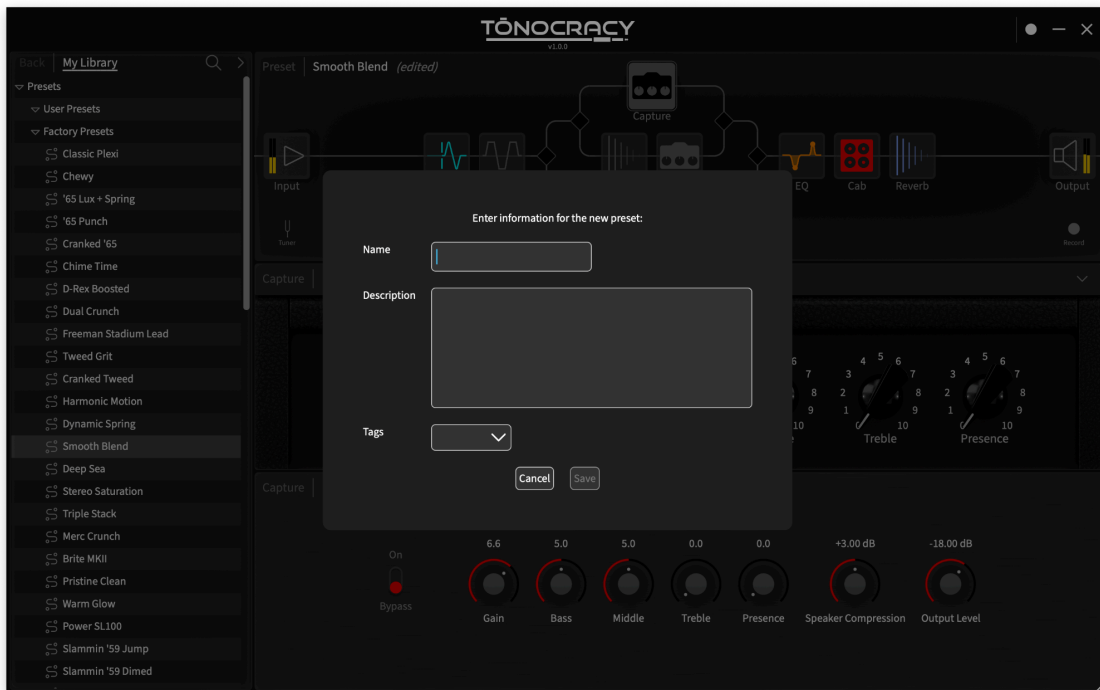
In addition to the signal flow blocks, the tuner and record features are also accessed through the signal flow area. Clicking the tuner button will show the tuner interface in the parameter panel. Clicking the record button will start or stop a recording of the main output. Once stopped, an OS file browser window will open to show you the location of your recording.

### Saving Presets

To save the current signal flow as a preset, click the "Save" button in the toolbar, and choose whether you want to save over the currently loaded preset, or save as a new preset. In both cases, you will be presented with a dialog that allows you to edit the name, description, and tags:

### LIBRARY MANAGEMENT

Tonocracy organizes content using a folder-based paradigm. Some sections of this folder structure contain factory content which is read-only. However, the rest can be freely modified and rearranged to suit your preferences.



**You can navigate within the library in two ways:**

1. Expand or collapse folders to display their content.
2. Double-click on folders. This action focuses the library browser on that folder's contents. To navigate to the parent folder, simply click "Back".

Double-clicking a preset will load it instantly. For other non-folder items, such as amps, ToneSnap gear snapshots, NAM files, and IRs, double-clicking will load the item into the currently selected signal flow block. If no block is selected, the item won't be loaded.

While certain item types are saved to a designated default location, you can move them around after saving or downloading.

Except for the factory content, all items can be moved by dragging and dropping within the folder structure. As

you drag an item, a horizontal line appears, indicating where it will be positioned upon release. To move an item inside a folder, first ensure the folder is expanded by toggling the expand/collapse arrow to point downwards.

Right-clicking on library items unveils a menu offering actions like "New Folder", "Delete", and "Edit Info". To rename an item, or modify its description or tags, select the "Edit Info" action.

To import external content, such as cabinet IRs or NAM files, simply drag and drop them from your computer's file browser into the desired Tonocracy library location.

Items created by another user will have an icon featuring a user avatar with a downward arrow. If you've shared an item for others to see, a similar icon with an upward arrow will appear.

### CLOUD BACKUPS AND SYNC

Tonocracy offers seamless backup of your private library and synchronizes content across multiple devices through the "Sync" feature. This feature is triggered with the toolbar button in the upper-right of the main window. Any modifications made to your local library are mirrored in your cloud account after syncing. If you install Tonocracy on another device, your entire library will be available as soon as you log in. If you use multiple devices, you can modify your library on any of them and synchronize the changes using the "Sync" feature. For instance, if you have a desktop in your studio and a laptop for live performances, you can design presets on the desktop, organize them into a setlist folder, and then sync them to the cloud. Syncing on your laptop then fetches these updates. Likewise, any last-minute adjustments on your laptop can be synced back.

**NOTE:** *Syncing isn't automatic - you need to manually initiate it by pressing the button. It's advisable to sync periodically to ensure that your local library is backed up, ready for restoration if required.*

### CLOUD LIBRARY

Tonocracy enables users to publish any self-created or imported library item. This published content becomes accessible to others via the cloud search function.

To explore content shared by other users, click the search icon located at the top-right of the library panel. This action reveals a new interface where you can input search parameters, tags, item types, and determine the sorting of results. By default, the newest published content is displayed.

To revert to your library view, press the "Back" button.

When you double-click an item from the search results, it's loaded just as it would from your local library. This feature allows you to preview the content or incorporate it into your current preset without needing to add it to your library first.

However, if you decide that you want to download an item directly to your library, click the download icon next to the search result. The item will be saved to its default location in your library based on the item type, e.g., presets to the "User presets" folder, captures to the "User captures" folder, and so forth.

To publish your own content, right-click the desired item in your library and select "publish". This opens a dialog where you can review the name, description, tags, etc. before it is made available to the wider community. *(NOTE: Any subsequent edits to a published item will be visible to other users!)*

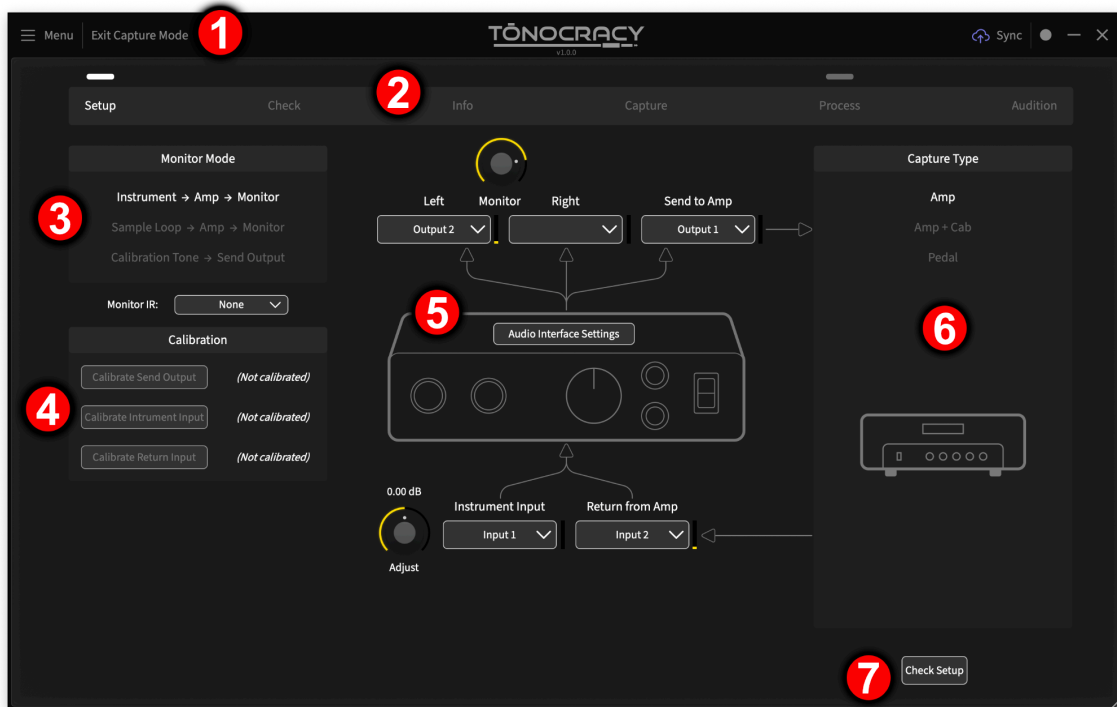
**NOTE:** *Before publishing, ensure that you are the original creator of the content or have secured explicit permission from the original author. This also applies to any content that is included by reference, such as a cabinet IR within a preset. Do not publish or otherwise redistribute any commercial content!*

### TONESNAP MODE

For more details on how to create your own ToneSnaps, refer to the *ToneSnap Gear Snapshot and Calibration Guide*, available at <https://tonocracy.com/download>

To exit ToneSnap mode, click the exit button [1]. The steps of the ToneSnap workflow are displayed in the top area [2]. You may toggle back and forth between the current step and the “Process” page, which shows you the current state of the cloud processing for all ToneSnaps that have not yet been added to your library. In the setup step, you have various monitoring options [3] (including the ability to listen through a cabinet impulse), buttons for triggering the calibration process [4], IO configuration, levels, and routing [5], selection of the type of ToneSnap being made [6], and buttons to move forward/backward in the workflow [7]

**To enter ToneSnap mode, click the “ToneSnap Mode” button in the toolbar.**



The steps of the ToneSnap workflow are as follows:

**Setup:** Configure your IO and signal routing, perform any calibration, choose the ToneSnap type

**Check:** Your setup will be checked for common problems

**Info:** Enter information about the gear being captured. (It is best to enter detailed information here, right before the capture is done, so that you don't need to recall it later.)

**ToneSnap:** Your gear will be analyzed using a pre-recorded signal

**Process:** Multiple ToneSnaps can be queued up for cloud processing

**Audition:** ToneSnaps which have completed processing can be auditioned and compared to the original before being added to your library

**In the “Info” step, you are prompted to fill out various fields:**

The name and notes fields [1] are required for all ToneSnaps. It is recommended that you note the model and manufacturer of the gear being captured, including any associated equipment such as a cabinet, microphones, etc.

The fields for knobs and switches [2] should be filled in to match the settings of your amp or pedal. You may add and remove fields as needed. These values will be used to automatically populate the description when you add the ToneSnap to your library after the audition step.



## ILOK LICENSE MANAGEMENT

Tonocracy uses PACE iLok to manage licenses. To activate or deactivate a license, use the options in the main menu. For details about the activation process, see <https://tonocracy.com/how-to-activate>.